



BRAMBLE

PRODUCT TEARSHEET



Shutter Media Cabinet

Shown in: **WHD**

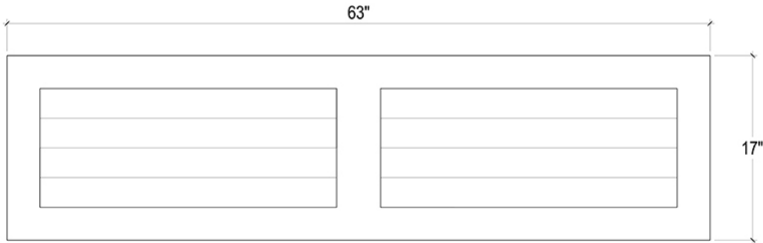
SKU: **24498**

Size: **63W x 17D x 31H in**

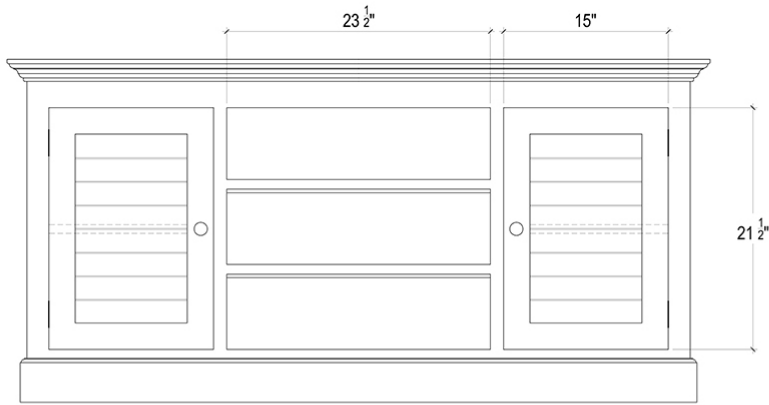


Overview

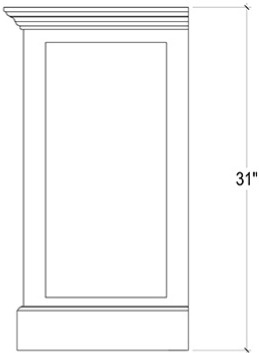
Louvered doors add character and eye-catching flair to the Shutter Plasma TV Stand. Ideal for the family room, this media center features solid mahogany with open shelving and enclosed cabinets on either side. This piece is offered with a vast array of finish and distress options to create a truly custom design.



TOP VIEW



FRONT VIEW



SIDE VIEW

Visual Highlights



Technical Specification

Dimensions	63W x 17D x 31H in	CBM	0.64
Number of Packages	1	Cubic Feet	22.6 ft³
Package 1 Dimensions	66.1 x 19.7 x 36.2 in	Package 1 Weight	113.54 lbs
Package Weight Total	113.54 lbs	Net Weight	88.18 lbs
Material	Mahogany	Best Seller	

<https://www.brambleco.com/24498>