



BRAMBLE

PRODUCT TEARSHEET



Cottage Tall Shutter Cabinet

Shown in: **WHD DRW**

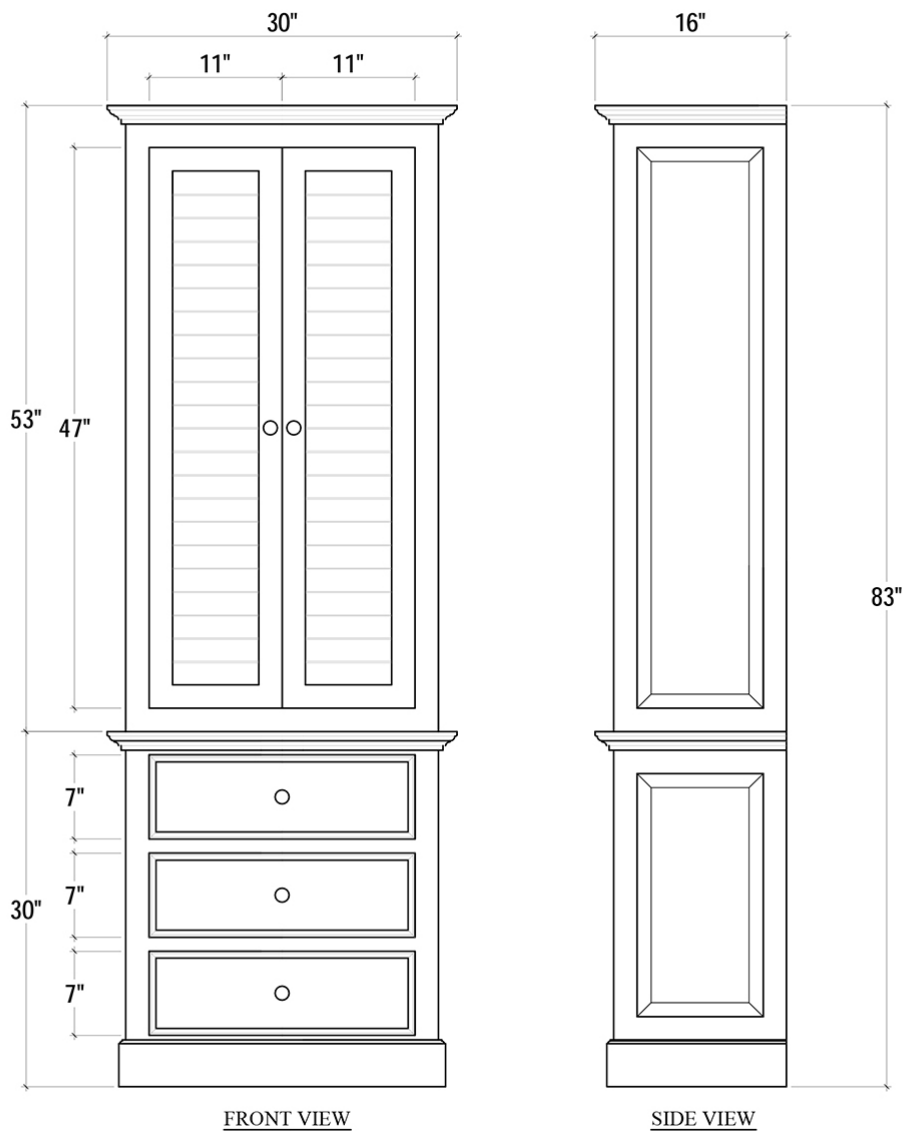
SKU: **25444**

Size: **30W x 16D x 83H in**



Overview

Bring a romantic cottage ambiance to a transitional space with the Nantucket Tall Shutter Cabinet. Built from solid mahogany wood, it's a versatile and beautiful piece providing storage in a compact form. This piece is offered with a vast array of finish and distress options to create a truly custom design.



Visual Highlights



Technical Specification

Dimensions	30W x 16D x 83H in	CBM	0.8
Number of Packages	2	Cubic Feet	28.25 ft³
Package 1 Dimensions	32.7 x 19.3 x 58.3 in	Package 1 Weight	74.71 lbs
Package 2 Dimensions	32.7 x 19.3 x 35.4 in	Package 2 Weight	45.44 lbs
		Net Weight	99.21 lbs
Package Weight Total 120.15 lbs			
Material	Mahogany	Best Seller	

<https://www.brambleco.com/25444>
